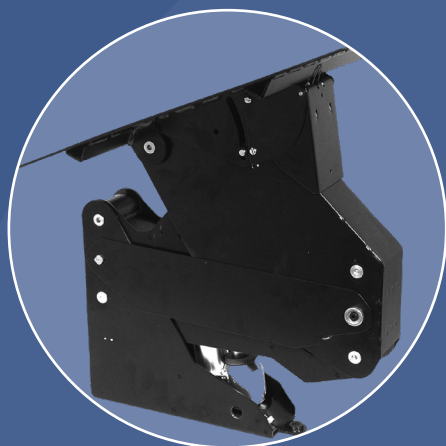


**Technique &  
Performance**



**Endurance  
& Durability**



# PRODUCT CATALOG



**Know-how &  
Customization**



**Safety &  
Quality**



With this catalogue it is our goal to ease the understanding of ROLTEC's productline in order to be able to choose the best solution when building an electric wheelchair.

Nothing is perfect but ROLTEC always strives to find the optimal solution for the end-user.

Our solutions and different chair-constructions are the result of 40 years of experience working closely with clients and therapists.

For more than 40 years ROLTEC has gained experience by gathering input from wheelchair users and therapists and for many years we have been the market leader for rear-wheel drive wheelchairs.



Flemming Enevoldsen  
Owner - Production Manager

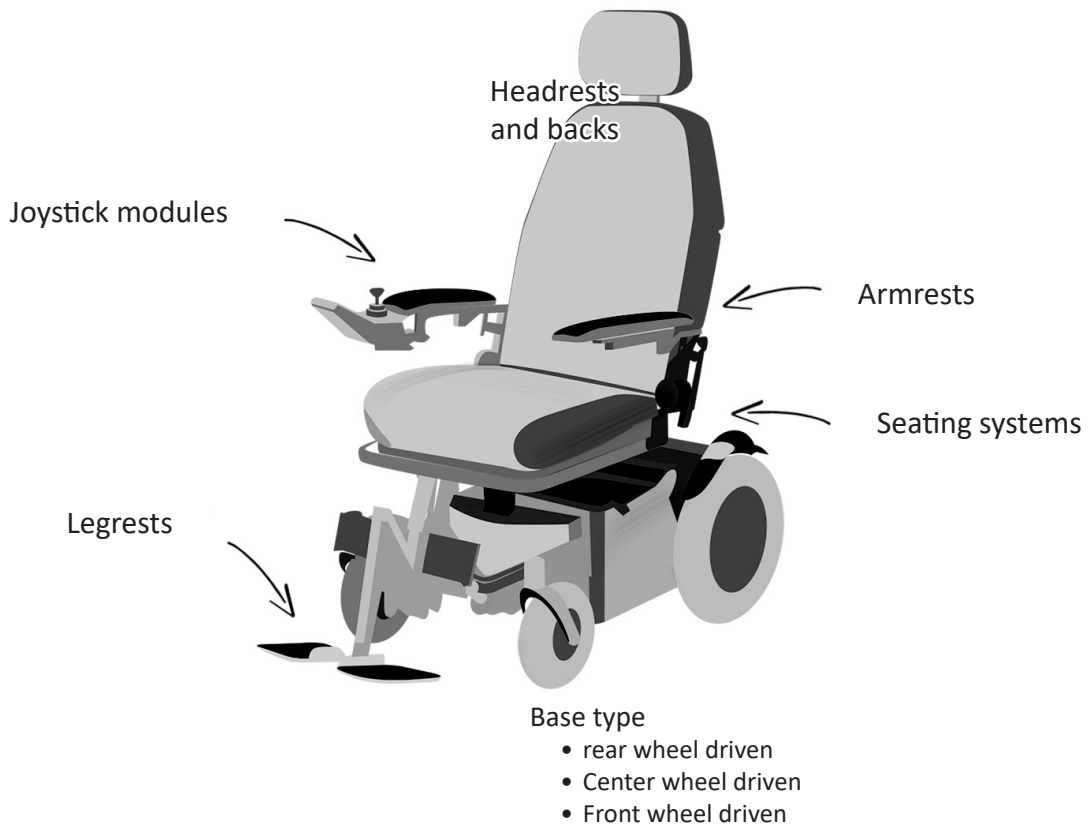


Dennis Holmgaard  
Owner - Technical Development



Thomas Pedersen  
Owner - Sales and Marketing

## How to build your ROLTEC chair...



ROLTEC's electric wheelchair are built upon a module-system that can be combined to the exact need of the client.

The client's physique and needs - where and how the chair must perform - all issues that must be addressed, discussed and dealt with in order to build the optimal chair.

Give and take when deciding in which direction to go... but never compromise on quality...!

At Roltec we look forward to offer you the very best the market can offer. We will guide you through the decision process to achieve not only a usable chair - but a chair that in performance, usability, and quality will accommodate the client's physique and daily needs.

Our consultants are ready to guide you - to adjust and customize your choices until the optimal chair is decided on and built.



<b>BASES PREPARED FOR LIFT</b>	<b>Moveo FRONT WHEEL DRIVE</b>	<b>CT4 REAR WHEEL DRIVE</b>	<b>HD- HEAVY DUTY REAR WHEEL DRIVE</b>	<b>PYTHON REAR WHEEL DRIVE</b>	<b>VIPER FRONT WHEEL DRIVE</b>	<b>BOA2 * CENTER WHEEL DRIVE</b>
<b>WHEELS + MOTORS + SHIELD INCLUDED</b> (Excl. batteries)	71881	70655	70674*	71090	71083	71492

\* The Heavy Duty base is complete with 400W motors - 80 Ah batteries - massive flex tires and electronically reduced to a maximum speed of 9km/h.  
The lift is reinforced and reduced reg. height and backward tilt.

<b>ADAPTIVE BASE</b>	<b>Moveo FRONT WHEEL DRIVE</b>	<b>CT4 REAR WHEEL DRIVE</b>	<b>HD- HEAVY DUTY REAR WHEEL DRIVE</b>	<b>PYTHON REAR WHEEL DRIVE</b>	<b>VIPER FRONT WHEEL DRIVE</b>	<b>BOA2 CENTER WHEEL DRIVE</b>
<b>ELECTRICALLY OPERATED LIFT &amp; TILT</b>	71882	72075	72076 (reinforced)	72075	72077	72065
<b>Extra 14gr/14cm**</b>	72018					<b>72018</b>
<b>Seat displacement**</b>	<b>72129</b>	<b>72130</b>		<b>72130</b>	<b>72130</b>	<b>72129</b>
<b>Manuel base*</b>	69284	69281	69282	69281	69283	69284

\* The manuel base must only be chosen when lift and tilt functions and electrically operated seat functions are not required!

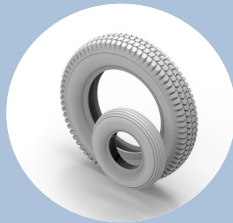
\*\* This will increase the chairs height with 2 cm

<b>Control package</b>	<b>Moveo FRONT WHEEL DRIVE</b>	<b>CT4 REAR WHEEL DRIVE</b>	<b>HD- HEAVY DUTY REAR WHEEL DRIVE</b>	<b>PYTHON REAR WHEEL DRIVE</b>	<b>VIPER FRONT WHEEL DRIVE</b>	<b>BOA2 CENTER WHEEL DRIVE</b>
<b>ISM6</b>	72099	72072	72072	72072	72101	72063
<b>ISM8</b>	72100	72074	72074	72074	72102	72064



## Ass. parts

## Punctureproof



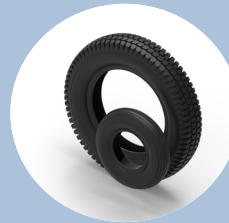
Extra charge f.  
punctureproof

Art. nr.

Tyres 250 x 3  
Tyres 300 x 8

90007  
90010

## Black tire



Extra charge black  
tire CLEAN

Art. nr.

piece

90011

## Wide Front subframe



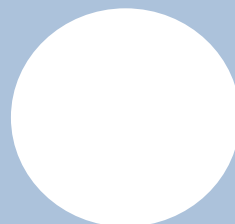
Extra charge f.  
wide Front sub-  
frame normal is 49  
cm. The width is  
59 cm.

Art. nr.

CT4/Python/HD

67898

## Emergency stop



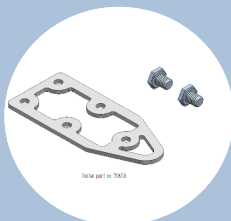
Emergency stop

Art. nr.

Emergency stop

90254

## Dahl kit



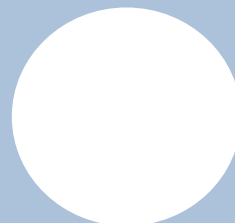
Dahl kit to viper/  
CT4/Python/HD

Art. nr.

Viper

70658

## Remote emergency stop



Remote  
emergency stop

Art. nr.

Remote emergency stop

90230

Note:

## R-Seat Seatframe

Seat frame	To Boa2- Moveo	To Viper- CT4-HD- Python
W:400-520mm	71432	71951
W:520-640mm	71952	71952

\* If the back should to be mounted on the frame then there is needed a mounting-kit - 71954



## R-Seat back Tilt Manually or electrically

Tilt of back	W:400-520mm	W:520-640mm
Tilting (actuator) 45°	71526	71957
Tilting (actuator) 80°	71579*	71956
Manuel tilting of back	71491	71955

\* If on Boa2 needed the seat to be folded down to horisontal position.

(Ask our consultants)

**NB!**

Trap protection for the BOA and Moveo as a kit - 71580

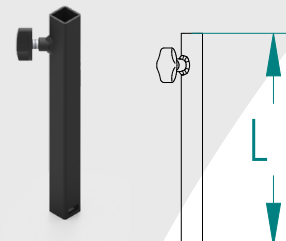




Accessories	Art. no
Headrest bracket Standard	71972

Headrest mounting tube	Art. no
Length 20cm	71958
Length 30cm	71959

20cm is used for standard electric back



## Headrest

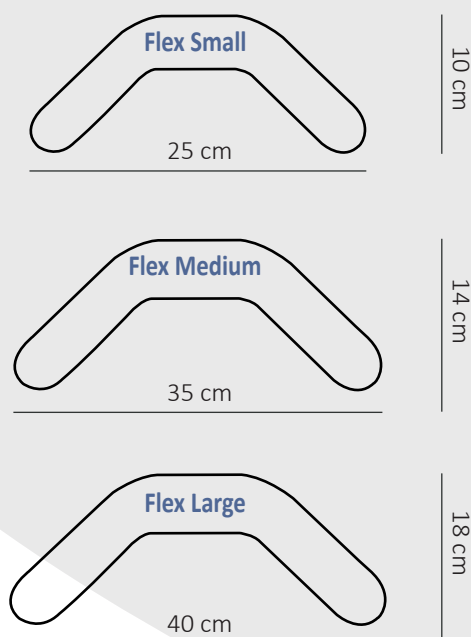
The standard, junior and high model headrest is suitable for the active and passive wheelchair user and ensures a correct seating position that provides the head support.



Headrest	Art. no
Standard - Height 13 cm/width 26 cm	A80021-13-26
Junior - Height 11 cm/width 22 cm	A80021-11-22
High - Height 16 cm/width 26 cm	A80021-16-26

## Flexible headrest

This headrest is suitable for the passive wheelchair user and ensures a correct seating position. The adjustable, flexible wings support the head backwards and sideways.



Headrest type "Flex"	Art. no
Flex Small - Height 9 cm/width 25 cm	A80022-09-25
Flex Medium - Height 12 cm/width 35 cm	A80022-12-35
Flex Large - Height 12 cm/width 40 cm	A80022-12-40

## Webbed seat pan

This seat pan is suitable as a universal solution, making it possible for various separate seating cushions to be positioned on different fixed-frame wheelchairs. Suitable for wheelchair users with a very high risk of developing pressure ulcers (decubitus ulcers). The mounting holes for the thresholds are pre-drilled, making it easy to mount a front or rear threshold.



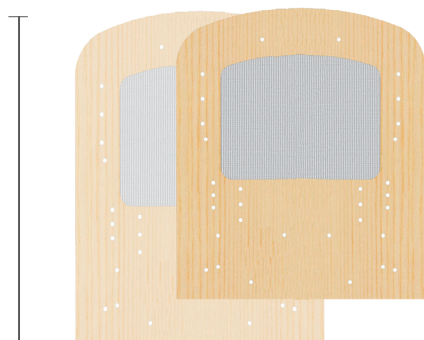
Depth

48 cm

or

55 cm

Depth  
48/55cm



Art. no	Seat Pan	
	Depth 48 cm	Depth 55 cm
Width 40 cm	A80017-48-40	A80017-55-40
Width 42 cm	A80017-48-42	A80017-55-42
Width 44 cm	A80017-48-44	A80017-55-44
Width 46 cm	A80017-48-46	A80017-55-46
Width 48 cm	A80017-48-48	A80017-55-48
Width 50 cm	A80017-48-50	A80017-55-50
Width 52 cm	A80017-48-52	A80017-55-52
Width 54 cm	A80017-48-54	A80017-55-54
Width 56 cm	A80017-48-56	A80017-55-56
Width 58 cm	A80017-48-58	A80017-55-58
Width 60 cm	A80017-48-60	A80017-55-60
Width 62 cm	A80017-48-62	A80017-55-62
Width 64 cm	A80017-48-64	A80017-55-64



## SEATS cushion AND BACKS

### ProAir®

For all our backs and seats we have as a standard chosen the new and innovative fabric Pro Air® that ensures good airflow, high comfort and durability.



#### Guarantee for identical replacement

Every cushion, backrest, neck support etc. is from our factory labeled with a unique code that ensures that we at all times can replace worn out or destroyed parts with identical items.

### “Optimum Comfort” seat cushion

The Optimum Comfort cushion is suitable for wheelchair users with a high risk of developing pressure ulcers (decubitus ulcers). Thanks to its anatomical design, this seat provides good pressure distribution and stability and prevents the wheelchair user from sliding forwards.

(Height of cushion 9 cm)

### “Comfort Visco” seat cushion

The Comfort Visco cushion is suitable for the wheelchair user with a high risk developing pressure ulcers (decubitus ulcers). The Comfort Visco cushion is made with a viscoelastic memory foam insert that shapes itself to the body contours of the user through the user's weight and body heat. The viscoelastic memory foam insert is exchangeable and can be replaced by a different type of viscoelastic insert at a later stage.

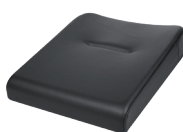
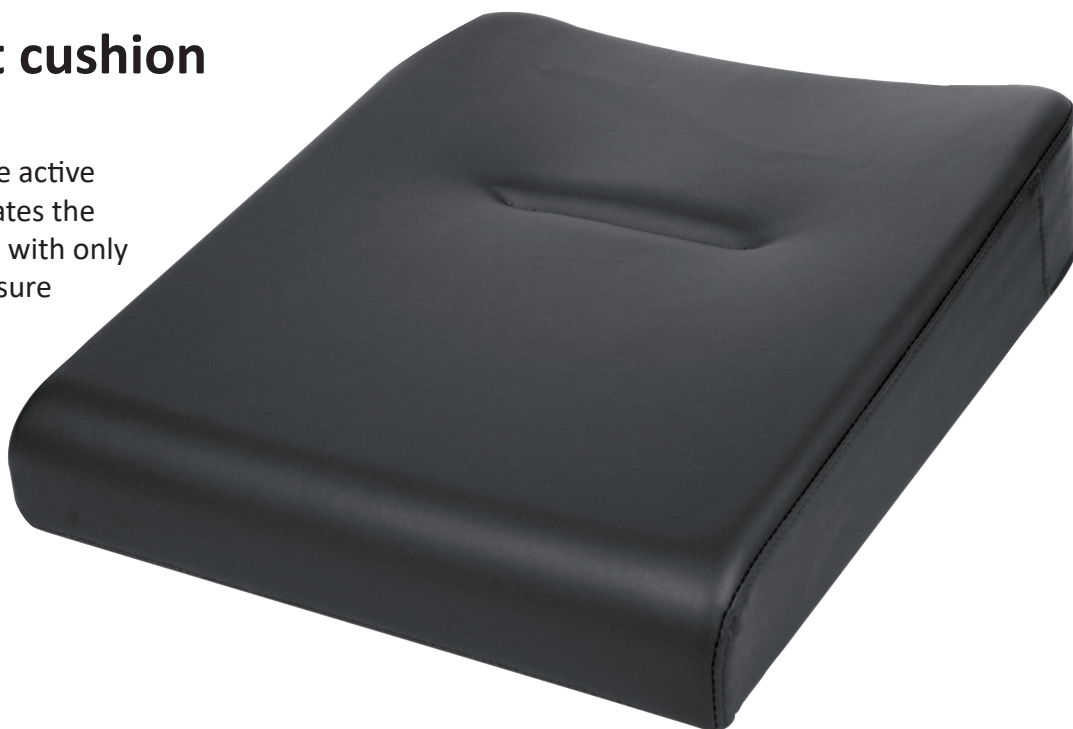
(Height of cushion 9 cm)



## “Standard” seat cushion

This cushion is suitable for the active wheelchair user, who appreciates the freedom of movement. Users with only a slight risk of developing pressure ulcers (decubitus ulcers)

(Height of cushion 7 cm)



Seat width	Standard Cushion		Optimum Comfort		Comfort Visco	
	Seat dept 48 cm	Seat dept 55 cm	Seat dept 48 cm	Seat dept 55 cm	Seat dept 48 cm	Seat dept 55 cm
40 cm	A80012-48-40	A80012-55-40	A80014-48-40	A80014-55-40	A80015-48-40	A80015-55-40
42 cm	A80012-48-42	A80012-55-42	A80014-48-42	A80014-55-42	A80015-48-42	A80015-55-42
44 cm	A80012-48-44	A80012-55-44	A80014-48-44	A80014-55-44	A80015-48-44	A80015-55-44
46 cm	A80012-48-46	A80012-55-46	A80014-48-46	A80014-55-46	A80015-48-46	A80015-55-46
48 cm	A80012-48-48	A80012-55-48	A80014-48-48	A80014-55-48	A80015-48-48	A80015-55-48
50 cm	A80012-48-50	A80012-55-50	A80014-48-50	A80014-55-50	A80015-48-50	A80015-55-50
52 cm	A80012-48-52	A80012-55-52	A80014-48-52	A80014-55-52	A80015-48-52	A80015-55-52
54 cm	A80012-48-54	A80012-55-54	A80014-48-54	A80014-55-54	A80015-48-54	A80015-55-54
56 cm	A80012-48-56	A80012-55-56	A80014-48-56	A80014-55-56	A80015-48-56	A80015-55-56
58 cm	A80012-48-58	A80012-55-58	A80014-48-58	A80014-55-58	A80015-48-58	A80015-55-58
60 cm	A80012-48-60	A80012-55-60	A80014-48-60	A80014-55-60	A80015-48-60	A80015-55-60
62 cm	A80012-48-62	A80012-55-62	A80014-48-62	A80014-55-62	A80015-48-62	A80015-55-62
64 cm	A80012-48-64	A80012-55-64	A80014-48-64	A80014-55-64	A80015-48-64	A80015-55-64



## 4 Different back bases...



### A. Standard

Stable base without adjustment.



### B. Webbed

Spring base which adapts itself to the contours of the body.



### C. Strapped

Stable top with multiple straps of adjustability for posture correction.



### D. Flexible strapped

Flexible still stable back with multiple straps that gives additional possibilities for correct adjustability and positioning.



## 4 Different back cushions...

### **"Free"**

The Free backrest is suitable for the active wheelchair user and ensures a lot of freedom of movement.

### **"Active"**

The active backrest is suitable for the active wheelchair user and ensures a lot of freedom of movement and a correct seating position by its low shaped lateral support.

### **"Xtra deep active"**

This backrest is like the "Active" developed for the active user who has a need for even more lateral support without losing the freedom of movement in the shoulder and arm region.

### **"Passive"**

The passive backrest is suitable for the passive wheelchair user and ensures a stable seating position by its high shaped lateral support.



## A Standard

Stable base with-  
out adjustment.



50 CM



57 CM

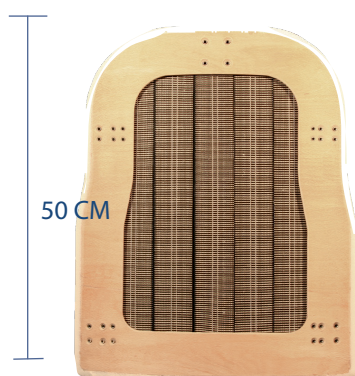
SEAT WIDTH	A - Standard back base height 50 cm			
	Free	Active	Deep Active	Passive
40 cm	A80000-50-40	A80004-50-40	A80029-50-40	A80008-50-40
42 cm	A80000-50-42	A80004-50-42	A80029-50-42	A80008-50-42
44 cm	A80000-50-44	A80004-50-44	A80029-50-44	A80008-50-44
46 cm	A80000-50-46	A80004-50-46	A80029-50-46	A80008-50-46
48 cm	A80000-50-48	A80004-50-48	A80029-50-48	A80008-50-48
50 cm	A80000-50-50	A80004-50-50	A80029-50-50	A80008-50-50
52 cm	A80000-50-52	A80004-50-52	A80029-50-52	A80008-50-52
54 cm	A80000-50-54	A80004-50-54	A80029-50-54	A80008-50-54
56 cm	A80000-50-56	A80004-50-56	A80029-50-56	A80008-50-56
58 cm	A80000-50-58	A80004-50-58	A80029-50-58	A80008-50-58
60 cm	A80000-50-60	A80004-50-60	A80029-50-60	A80008-50-60
62 cm	A80000-50-62	A80004-50-62	A80029-50-62	A80008-50-62
64 cm	A80000-50-64	A80004-50-64	A80029-50-64	A80008-50-64

SEAT WIDTH	A - Standard back base height 57cm			
	Free	Active	Deep Active	Passive
40 cm	A80000-57-40	A80004-57-40	A80029-57-40	A80008-57-40
42 cm	A80000-57-42	A80004-57-42	A80029-57-42	A80008-57-42
44 cm	A80000-57-44	A80004-57-44	A80029-57-44	A80008-57-44
46 cm	A80000-57-46	A80004-57-46	A80029-57-46	A80008-57-46
48 cm	A80000-57-48	A80004-57-48	A80029-57-48	A80008-57-48
50 cm	A80000-57-50	A80004-57-50	A80029-57-50	A80008-57-50
52 cm	A80000-57-52	A80004-57-52	A80029-57-52	A80008-57-52
54 cm	A80000-57-54	A80004-57-54	A80029-57-54	A80008-57-54
56 cm	A80000-57-56	A80004-57-56	A80029-57-56	A80008-57-56
58 cm	A80000-57-58	A80004-57-58	A80029-57-58	A80008-57-58
60 cm	A80000-57-60	A80004-57-60	A80029-57-60	A80008-57-60
62 cm	A80000-57-62	A80004-57-62	A80029-57-62	A80008-57-62
64 cm	A80000-57-64	A80004-57-64	A80029-57-64	A80008-57-64

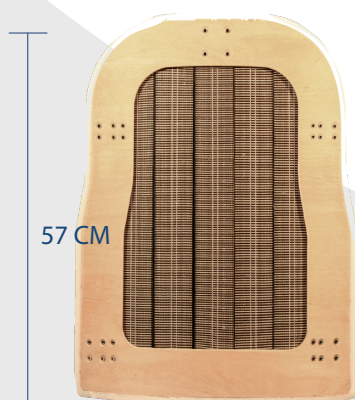


## B Webbed

Spring base which adapts itself to the contours of the body.



SEAT WIDTH	B - Webbed back base height 50cm			
	Free	Active	Deep Active	Passive
40 cm	A80001-50-40	A80005-50-40	A80030-50-40	A80009-50-40
42 cm	A80001-50-42	A80005-50-42	A80030-50-42	A80009-50-42
44 cm	A80001-50-44	A80005-50-44	A80030-50-44	A80009-50-44
46 cm	A80001-50-46	A80005-50-46	A80030-50-46	A80009-50-46
48 cm	A80001-50-48	A80005-50-48	A80030-50-48	A80009-50-48
50 cm	A80001-50-50	A80005-50-50	A80030-50-50	A80009-50-50
52 cm	A80001-50-52	A80005-50-52	A80030-50-52	A80009-50-52
54 cm	A80001-50-54	A80005-50-54	A80030-50-54	A80009-50-54
56 cm	A80001-50-56	A80005-50-56	A80030-50-56	A80009-50-56
58 cm	A80001-50-58	A80005-50-58	A80030-50-58	A80009-50-58
60 cm	A80001-50-60	A80005-50-60	A80030-50-60	A80009-50-60
62 cm	A80001-50-62	A80005-50-62	A80030-50-62	A80009-50-62
64 cm	A80001-50-64	A80005-50-64	A80030-50-64	A80009-50-64



SEAT WIDTH	B - Webbed back base height 50cm			
	Free	Active	Deep Active	Passive
40 cm	A80001-57-40	A80005-57-40	A80030-57-40	A80009-57-40
42 cm	A80001-57-42	A80005-57-42	A80030-57-42	A80009-57-42
44 cm	A80001-57-44	A80005-57-44	A80030-57-44	A80009-57-44
46 cm	A80001-57-46	A80005-57-46	A80030-57-46	A80009-57-46
48 cm	A80001-57-48	A80005-57-48	A80030-57-48	A80009-57-48
50 cm	A80001-57-50	A80005-57-50	A80030-57-50	A80009-57-50
52 cm	A80001-57-52	A80005-57-52	A80030-57-52	A80009-57-52
54 cm	A80001-57-54	A80005-57-54	A80030-57-54	A80009-57-54
56 cm	A80001-57-56	A80005-57-56	A80030-57-56	A80009-57-56
58 cm	A80001-57-58	A80005-57-58	A80030-57-58	A80009-57-58
60 cm	A80001-57-60	A80005-57-60	A80030-57-60	A80009-57-60
62 cm	A80001-57-62	A80005-57-62	A80030-57-62	A80009-57-62
64 cm	A80001-57-64	A80005-57-64	A80030-57-64	A80009-57-64

## C Strapped

Stable top with multiple straps of adjustability for posture correction.



SEAT WIDTH	C - Strapped back base height 50 cm			
	Free	Active	Deep Active	Passive
40 cm	A80002-50-40	A80006-50-40	A80031-50-40	A80010-50-40
42 cm	A80002-50-42	A80006-50-42	A80031-50-42	A80010-50-42
46 cm	A80002-50-44	A80006-50-44	A80031-50-44	A80010-50-44
44 cm	A80002-50-46	A80006-50-46	A80031-50-46	A80010-50-46
48 cm	A80002-50-48	A80006-50-48	A80031-50-48	A80010-50-48
50 cm	A80002-50-50	A80006-50-50	A80031-50-50	A80010-50-50
52 cm	A80002-50-52	A80006-50-52	A80031-50-52	A80010-50-52
54 cm	A80002-50-54	A80006-50-54	A80031-50-54	A80010-50-54
56 cm	A80002-50-56	A80006-50-56	A80031-50-56	A80010-50-56
58 cm	A80002-50-58	A80006-50-58	A80031-50-58	A80010-50-58
60 cm	A80002-50-60	A80006-50-60	A80031-50-60	A80010-50-60
62 cm	A80002-50-62	A80006-50-62	A80031-50-62	A80010-50-62
64 cm	A80002-50-64	A80006-50-64	A80031-50-64	A80010-50-64

SEAT WIDTH	C - Strapped back base height 57 cm			
	Free	Active	Deep Active	Passive
40 cm	A80002-57-40	A80006-57-40	A80031-57-40	A80010-57-40
42 cm	A80002-57-42	A80006-57-42	A80031-57-42	A80010-57-42
44 cm	A80002-57-44	A80006-57-44	A80031-57-44	A80010-57-44
46 cm	A80002-57-46	A80006-57-46	A80031-57-46	A80010-57-46
48 cm	A80002-57-48	A80006-57-48	A80031-57-48	A80010-57-48
50 cm	A80002-57-50	A80006-57-50	A80031-57-50	A80010-57-50
52 cm	A80002-57-52	A80006-57-52	A80031-57-52	A80010-57-52
54 cm	A80002-57-54	A80006-57-54	A80031-57-54	A80010-57-54
56 cm	A80002-57-56	A80006-57-56	A80031-57-56	A80010-57-56
58 cm	A80002-57-58	A80006-57-58	A80031-57-58	A80010-57-58
60 cm	A80002-57-60	A80006-57-60	A80031-57-60	A80010-57-60
62 cm	A80002-57-62	A80006-57-62	A80031-57-62	A80010-57-62
64 cm	A80002-57-64	A80006-57-64	A80031-57-64	A80010-57-64

# D

## Flexible strapped

Flexible still stable back with multiple straps that gives additional possibilities for correct adjustability and positioning.



SEAT WIDTH	D - Flexible Strapped back base height 50 cm			
	Free	Active	Deep Active	Passive
40 cm	A80003-50-40	A80007-50-40	A80032-50-40	A80011-50-40
42 cm	A80003-50-42	A80007-50-42	A80032-50-42	A80011-50-42
44 cm	A80003-50-44	A80007-50-44	A80032-50-44	A80011-50-44
46 cm	A80003-50-46	A80007-50-46	A80032-50-46	A80011-50-46
48 cm	A80003-50-48	A80007-50-48	A80032-50-48	A80011-50-48
50 cm	A80003-50-50	A80007-50-50	A80032-50-50	A80011-50-50
52 cm	A80003-50-52	A80007-50-52	A80032-50-52	A80011-50-52
54 cm	A80003-50-54	A80007-50-54	A80032-50-54	A80011-50-54
56 cm	A80003-50-56	A80007-50-56	A80032-50-56	A80011-50-56
58 cm	A80003-50-58	A80007-50-58	A80032-50-58	A80011-50-58
60 cm	A80003-50-60	A80007-50-60	A80032-50-60	A80011-50-60
62 cm	A80003-50-62	A80007-50-62	A80032-50-62	A80011-50-62
64 cm	A80003-50-64	A80007-50-64	A80032-50-64	A80011-50-64

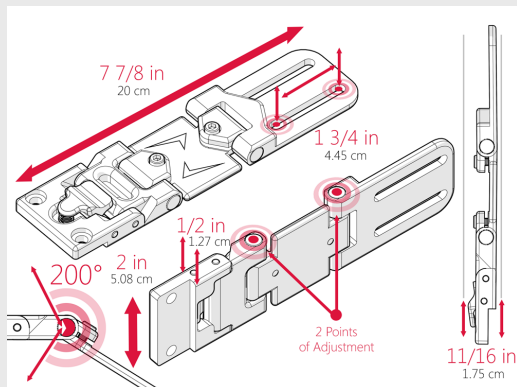


SEAT WIDTH	D - Flexible Strapped back base height 57 cm			
	Free	Active	Deep Active	Passive
40 cm	A80003-57-40	A80007-57-40	A80032-57-40	A80011-57-40
42 cm	A80003-57-42	A80007-57-42	A80032-57-42	A80011-57-42
44 cm	A80003-57-44	A80007-57-44	A80032-57-44	A80011-57-44
46 cm	A80003-57-46	A80007-57-46	A80032-57-46	A80011-57-46
48 cm	A80003-57-48	A80007-57-48	A80032-57-48	A80011-57-48
50 cm	A80003-57-50	A80007-57-50	A80032-57-50	A80011-57-50
52 cm	A80003-57-52	A80007-57-52	A80032-57-52	A80011-57-52
54 cm	A80003-57-54	A80007-57-54	A80032-57-54	A80011-57-54
56 cm	A80003-57-56	A80007-57-56	A80032-57-56	A80011-57-56
58 cm	A80003-57-58	A80007-57-58	A80032-57-58	A80011-57-58
60 cm	A80003-57-60	A80007-57-60	A80032-57-60	A80011-57-60
62 cm	A80003-57-62	A80007-57-62	A80032-57-62	A80011-57-62
64 cm	A80003-57-64	A80007-57-64	A80032-57-64	A80011-57-64

## Side support



You can configure your side support.



### Base bracket



back angle for  
lateral support

Art. nr.  
72109

### extension



extension support  
for side support

Art. nr.  
72108

### Side hinge



Side hinge for side  
support

Art. nr.  
72117

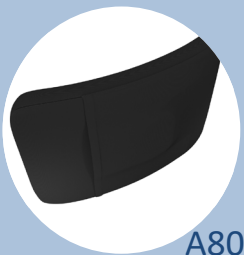
### Side support cushion



Side support cush-  
ion, 7,5x12,5 cm

Art. nr.  
A80036-7-12

### Side support cushion



Side support cush-  
ion, 10x15 cm

Art. nr.  
A80036-10-15

## Ass. parts

### Bag Hook



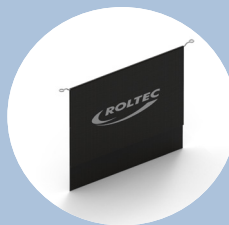
Bag Hook mounted on headrest

Art. nr.

Bag Hook

72098

### Bag



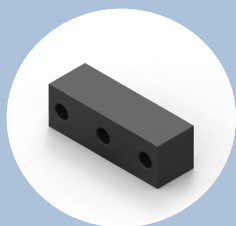
ROLTEC bag with hanger bracket

Art. nr.

piece

66562

### spacers



Spacers  
Hole 57 mm C-C

Art. nr.

piece 5mm

67500

piece 25mm

71413



## Armrest base

The armrest consists of two separate art. no. ( metalpart/base + cushion) which must be chosen:

### Armrest base Fixed

The fixed armrest is adjustable vertically and horizontally



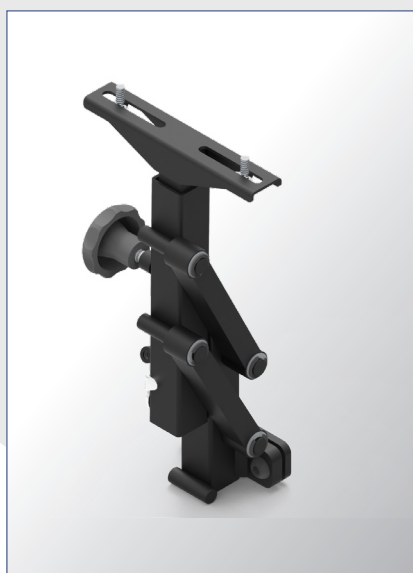
	Armrest base Fixed
Right	69278
Left	69279

### Armrest base Collapsible

The complete collapsible armrest consists of the metal

1: The hard part – complete adjustable metalbase.

The fixed armrest is adjustable vertically and horizontally



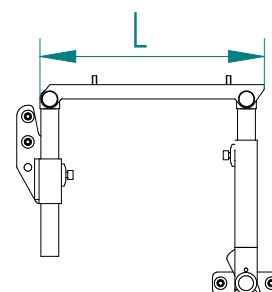
	Armrest base Collapsible
Right	69276
Left	69277

## Armrest base, Foldable

The metal part – complete adjustable metalbase.



	Choose length			
	25 cm	30 cm	35 cm	40 cm
Right	66101	66102	66103	66104
Left	66105	66106	66107	66108

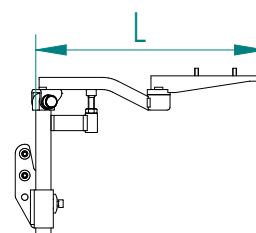


## Armrest base, Upfoldable Obliquely

The metal part – complete adjustable metalbase.



	Choose length		
	30 cm	35 cm	40 cm
Right	68930	68970	68971
Left	68972	68931	68973



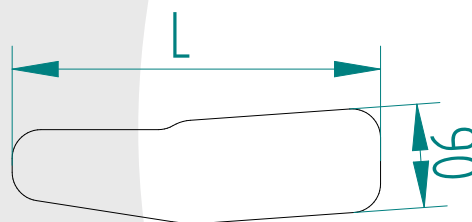
## Armrest cushion with leather upholstery

The cushion can be positioned on base in different locations.  
If reinforcement is needed a strong metalplate can be mounted under the wooden base.

For further finish and protection the armrest is available with complimentary aluminium edges.

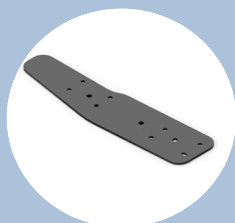


Armrest cushion, leather	Choose length	
	32 cm	42 cm
Right	66604	66603
Left	66606	66605



## Armrest ass.

### Reinforcement metal sheet for armrest



Shaped black metal sheet mounts under wooden base of armrest cushion

Art. nr.

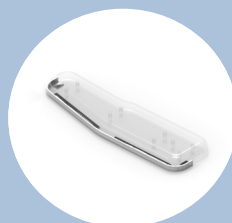
Length 32 cm.

70912

Length 42 cm.

70913

### Alu. protection for armrest



Aluminium rim for armrest - 32 cm for finish and protection

Art. nr.

Length 32 cm.

66608

### Alu. protection for armrest



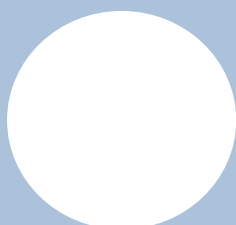
Aluminium rim for armrest - 42 cm for finish and protection

Art. nr.

Length 42 cm.

66610

### Upper arm support



Upper arm support (bracket)

Art. nr.

Right

72127

Left

72128

### Upper arm support



Upper arm pillow for bracket

Art. nr.

Pillow

A80037-7-8

## Multi adjustable Thigh/hip support



The removable Thigh/hip support can be placed at the knee or at the hip. The adjustment possibilities in the bracket, ensures variable positioning of the pad.

	Art. no
Thigh/hip support base	71498

## Cushion for Thigh/hip support

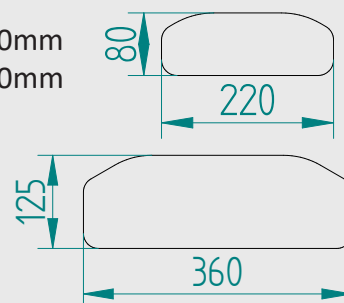


The standard Thigh/hip cushion is suitable for both the active and passive wheelchair user and ensures a correct seating position.

By lining up the back of the side cushions with the pelvis and the front of the cushions with the knees, their wedge-shaped, flat design and comfortable foam offer the wheelchair user stability and correct posture.

The pillow is available in 2 sizes.

Cushion Small L=220mm  
Cushion Large L=360mm



	Art. no
Support cushion - right or left - Standard	A80028-22
Support cushion - right or left - leather - Large	A80028-36



## Support/hold ass.

### Arm 75mm for Thigh/hip support



Bracket for Thigh/hip support -  
Arm 75mm

Art. nr.

One piece

69293

### Arm 50mm for Thigh/hip support



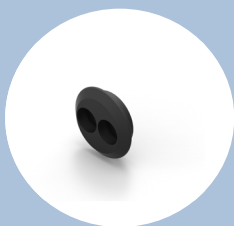
Bracket for Thigh/hip support -  
Arm 50mm

Art. nr.

One piece

69294

### Fixation Plug for Thigh/hip support



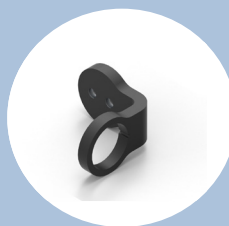
Fixation Plug for Thigh/hip  
support

Art. nr.

One piece

71028

### 90° angle for Thigh/hip support



90° angle for Thigh/hip  
support

Art. nr.

One piece

69296

N.B

The screws must be ordered next to, with Art nr. 60833.

## Legrest elevation - Seperate

This legrest can be operated individually electrically or manually



Electric elevation w. calf support	Art. no
Right	68701
Left	68702
Complete set – right & left	67631

Side mounted powered legrests left and right. The legrest is "cordless" and connects automatically when mounted.

The legrest can be swung out to the side or completely removed.

No visible plugs or connecting wires - everything is hidden internally.

The leg supports can be mechanically adjusted up / down and backwards and forwards. The strong aluminum footrests are adjustable in angle - and back and forth.

The base plate is made of a strong aluminum plate with non-slip pattern on the top.



Manual elevation w. calf support	Art. no
Right	70996
Left	70997
Complete set – right & left	71038

Side mounted legrest is manually adjustable. Right and left.

The leg supports can swing out to the side or be completely removed as required.

The footrests fold up the sides, allowing additional space in front of the chair during transfers.

The leg supports can be mechanically adjusted up / down and backwards and forwards.

The position controlling the leg angle is adjustable. The strong aluminum footrests are also adjustable in angle.

## Leg elevation - Centerlift

This leg support can only be operated parallel – electrically or manually



Central mounted powered center legrest with length compensation.

This highly adjustable solution provides optimal space in front of the wheelchair as the footplates are collapsible.

The legrest can be adjusted in length and angle.

The leg support is equipped with two motors - one which elevates the leg rest and one that takes care of the displacement providing the desired and needed length compensation.

The two motors can be operated separately, or simultaneously achieving desired positions for driving, resting etc.

The leg supports can be elevated from zero to almost 90 degrees allowing the user to obtain a close to horizontal position.

### Center elevation - electrically controlled

	Art. no
Model B20 W: 400-520mm	71383
Model B20 W: 520-640mm	71618



Manually adjustable central mounted legrest.

This manual legrest from ROLTEC can be adjusted forward, backwards and up and down.

The footplate folds up against the chair.

The central mono legrest allows the user to be positioned in his chair with the knees bend as wished.

### Center elevation - manually controlled

	Art. no
Model B00 W: 400-520mm	71394
Model B00 W: 520-640mm	71619



You can configure your Central legrest electric. The legrest must be composed of 4 parts, choice C can be avoided if there is no need for it.  
Select below:

#### Choice A :base Width

##### Central legrest Base



Central legrest electric elev. BASE (B20) w400-520mm

Art. nr.  
**71629**

or

##### Central legrest Base

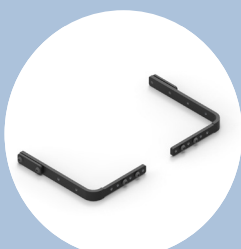


Central legrest electric elev. BASE (B20) W520-640mm

Art. nr.  
**71630**

#### Choice B: Bracket for mounting

##### Cornorbraket



Cornorbraket mounting set straight

Art. nr.  
**71633**

or

##### Cornorbraket



Cornorbraket mounting set displaced

Art. nr.  
**71634**

#### Choice C: Calfsupport

##### calfsupprt

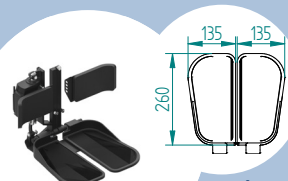


Upgrade: Calfsupport for central legrest Large Set left + right

Art. nr.  
**71637**

#### Choice D: footrest

##### Foot plate electric folding



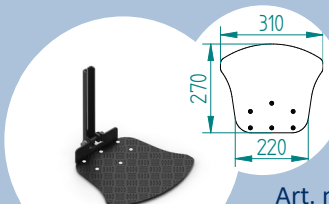
Art. nr.

**72106**

or

#### Choice D: footrest

##### Foot plate one

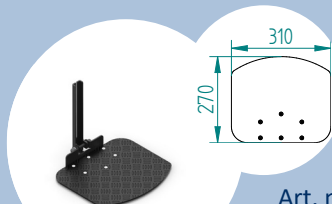


Art. nr.

**71627**

or

##### Foot plate one

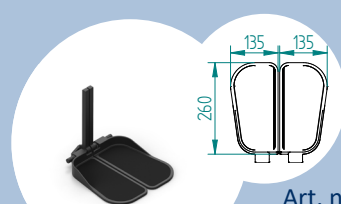


Art. nr.

**71626**

or

##### Foot plate to



Art. nr.

**71628**



You can configure your Central legrest manuel. The legrest must be composed of 4 parts, choice C can be avoided if there is no need for it.  
Select below:

**Choice A :base Width**

**Central legrest Base**



Central legrest  
manuel elev. BASE  
(B00) w400-  
520mm

Art. nr.  
**71631**

or

**Central legrest Base**

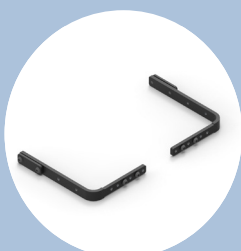


Central legrest  
manuel BASE  
(B00) W520-  
640mm

Art. nr.  
**71632**

**Choice B: Bracket for mounting**

**Cornorbraket**

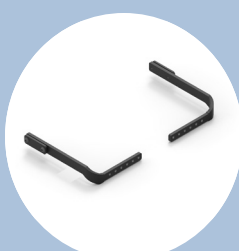


Cornorbraket  
mounting set  
straight

Art. nr.  
**71633**

or

**Cornorbraket**



Cornorbraket  
mounting set  
displaced

Art. nr.  
**71634**

**Choice C: Calfsupport**

**calfsupprt**

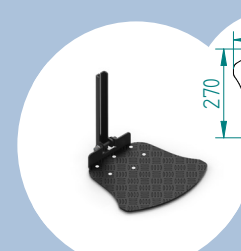


Upgrade:  
Calfsupport for ce-  
tral legrest Large  
Set left + right

Art. nr.  
**71637**

**Choice D: footrest**

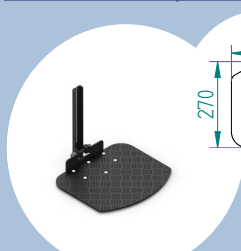
**Foot plate one**



Art. nr.  
**71627**

or

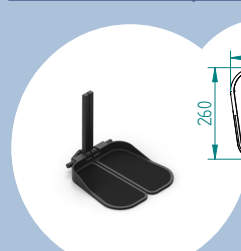
**Foot plate one**



Art. nr.  
**71626**

or

**Foot plate to**



Art. nr.  
**71628**

## Leg elevation ass.

### Foot plate leather cushioned



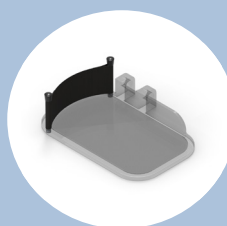
Foot plate - foam and leather for higher comfort - avoids pressure wounds (1 pc. for "seperate" footrest)

Art. nr.

supersoft 7 cm

69324

### Soft heelcounter



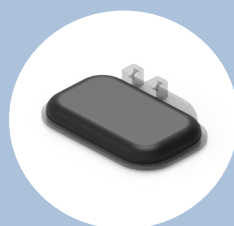
Soft leather heel caps 48 mm - attaches with straps (complete set - incl. 2 pc. for "seperate" footrest)

Art. nr.

Set for "seperate" foot rest

90122

### Foot plate leather cushioned



Foot plate - foam and leather for higher comfort - avoids pressure wounds (1 pc. for "seperate" footrest)

Art. nr.

soft 2 cm

69323

### Amputation leg support



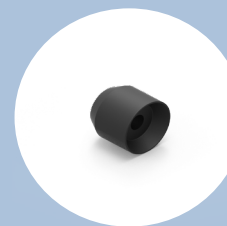
Amputation leg support

Art. nr.

Left  
Right

71971  
71970

### Spacer



Spacer bushing for leg support 2-piece

Art. nr.

One piece

66483





## R- Net

R-net is a multi-module control system for the control of rehab-type power-chairs.

While being simple and easy to install and use, the system is highly flexible and expandable with connection of up to fifteen modules being possible.

A key feature is the ability to provide a simple, two module solution at a competitive price, but maintaining the ability to address even the most complex rehab requirements. There are no restrictions on compatibility between Joystick Modules, Power Modules and Intelligent Seating/Lighting Modules. In short, modules can be mixed-and-matched to provide the optimum of performance and cost.

**R-Net Joystick LED basic****Basic Joystick**

Art. no.

75044

**The LED Joystick Modules** offer an entry-level product that is both stylish and ergonomic.

- Ergonomic and stylish design
- Easy to operate pushbuttons
- High visibility LEDs
- With lighting control
- Charging socket

The LED Joystick Modules offer an entry-level product that is both stylish and ergonomic. The positions of the LEDs and the buttons, as well as the operating forces of the buttons, have been chosen to make the Joystick Module as user-friendly as possible. Furthermore, high-intensity LEDs have been used to ensure they are visible in even the very brightest light.

The joystick module can control drive and seating, as well as any other system mode as long as there is a suitable display. Of course, both versions also contain a convenient, industry-standard charging port.

**R-Net CJSM Joystick with display & light****Joystick display/light**

Art. no.

75000

**Color LCD Joystick Modules** provide a modern and highly aesthetic user display, which enhances the appearance of the whole powerchair.

- Ergonomic and stylish design
- Easy-to-operate pushbuttons
- Hi-resolution graphics color LCD
- Large and clear screen icons
- Two jack sockets as standard
- On-Board Programming (OBP) option
- With lighting control
- Charging socket

The size of the graphics on the screen has also been optimized to make them as large as possible to reflect the operating condition of the wheelchair. The positions of the display and the buttons, as well as the operating forces for the buttons, are chosen to make the Joystick Module as user-friendly as possible.

**R-Net CJSM2 Joystick - advanced****Joystick Advanced**with bluetooth  
and mouse

Art. no.

75045

75072

**The World's Most Advanced Joystick Module**

The next-generation R-net Joystick Modules set new standards in user-interfaces – not least from the inclusion of a large, high-resolution and modern LCD screen.

Crisp graphics are made as large as possible to reflect the operating condition of the wheelchair. Large, high-resolution 3.5" VGA color display.

- Infra-Red (IR) Control as standard
- Integrated Bluetooth control as an option
- Stylish and ergonomic design
- Built-in light sensor to automatically adjust screen brightness
- Paddle switches for easy access to user controls
- Enhanced programming and customization options
- Speaker for enhanced horn volume
- Metal case for improved robustness
- Connect-and-Go

Additionally, easy-to-operate paddles switches are included as standard for on/off, profile, mode and speed adjustment selection, meaning that existing joystick module variants which include toggle switches and potentiometers are no longer required. There is also a significant amount of new programmability related to the user controls; for example the speed adjustment paddle can be programmed to momentary or continuous operation.

### Joystick module for dual attendant



#### Dual Attendant

Art. no.	75017
----------	-------

### Attendant Module

The R-net Attendant Module can be connected to any point in the system communications bus and can then provide control of drive, seating and any other function that is present.

- Simple transfer to/from user control
- Attendant speed control and display
- Attendant control of seating functions
- Attendant control of all other modes

The R-net Attendant Module can be connected to any point in the system communications bus and to provide control of drive, seating and any other function that is present. Transfer of control between user and attendant is via a simple pushbutton, with additional keys for setting the attendant's drive speed and accessing other system modes.

Traditional attendant systems are set so that the user can never gain control from the attendant. However, for maximum flexibility, the R-net can be programmed to allow this exception to happen should it be required.

### Gyro - incl. cables



#### Gyro

Art. no.	75033
----------	-------

### Gyro Module

Gyro technology adds an extra dimension to controlling a wheelchair, by maintaining the desired drive direction irrespective of the external forces acting on the wheelchair. Gyro technology adds an extra dimension to controlling a wheelchair, by maintaining the desired drive direction irrespective of the external forces acting on the wheelchair.

- Gyro technology for superior drive control
- Supports faster drive speeds on front-wheel-drive wheelchairs
- Eliminates spin-out
- Eliminates fish-tailing
- Perfect control on cambers
- Straight line driving over obstacles
- Dual gyros for enhanced safety
- Multiple mounting orientations
- Operates with standard Power Module

#### Straight Line Control

If the wheelchair is driving across a non-level surface, for example a camber, then to achieve straight line driving the user has to make frequent steering corrections. This is inconvenient when using a joystick, but becomes difficult when using a switch-type controlling device, such as a switch pad or head array. A further challenge in maintaining straight line driving is presented by obstacles, such as kerbs or door thresholds, particularly if they are of uneven height. The Gyro Module vastly improves control in all of these situations.

### R-Net relay box for actuator output 2 relays.

R-Net relay box that makes one actuator output switches to 2 relays outputs



#### R-Net relay box

Art. no.	71265
----------	-------

### Omni Speciality Control Interface from PG Drives Technology



#### Omni2

Art. no.	75093
----------	-------

The R-net Omni provides a universal Specialty Input Device interface with a large, easy-to-read, color LCD screen.

- General R-net interface for specialty controls
- Large, hi-resolution color display
- Dual channel inputs
- User selectable display - indoors/outdoors
- Customizable user menu
- Large, easy-to-read icons
- Programmable user text
- On-board configuration/programming
- Compatible with all R-net Input Devices
- Can control all powerchair functions
- Infra-Red (IR) control as standard

The next-generation Omni2 sets new standards in universal specialty control – not least from the inclusion of a high-resolution, 3.5" full VGA screen. Reflecting a family-look with the recently introduced CJS2, the clear and crisp graphics are made as large as possible to indicate the operating status of the powerchair. The new, aesthetically-pleasing, two-section design, features an ultra-slimline display. This includes an in-built light sensor that automatically adjusts screen brightness for improved visibility in sunlight or reduced glare in environments such as the cinema. All of the Specialty Input Device (SID)

### mo-Vis all-round Joystick



#### Two connection options All round Joystick

Two connection options	All round Joystick	
	R-NET bus	Omni
Art. no.	75062	75051

**The All-round Joystick is a compact version of the standard electronic wheelchair joystick module. As the name suggests, this joystick has been developed for all-round use and is suitable for the major part of wheelchair users. This fully proportional joystick has a compact housing and 2 jack inputs for switches**

- Fully proportional joystick with standard amplitude and power requirement (250 gr)
- Also available in a light version : see "All-round Joystick Light"
- Built in a compact and discreet housing with possibility of 1 or 2 "satellite switches" to connect directly via integrated insert parts
- Switches for on/off function or mode button, so directly connectable
- All-round use: can be used as a chin joystick, standard joystick, attendant joystick
- Built-in interface with sophisticated electronics: joystick adaptable to individual capabilities and needs
- Free downloadable software to configure joystick via PC (equipped with a mini USB port)
- Delivered with Quick-to-mount (Q2M) Rods and Clamps
- Omni, R-net, Easy Rider, e-fix Alber, Otto Bock Curtis and DX compatible (for Easy Rider, Efix, Otto Bock Curtis or DX, a supplementary interface is required)

### mo-Vis Satellite twister



mo-Vis all-round Joystick equipped with two satellite switches

#### single switch (arm) Switch

Art. no.	75053
----------	-------

### Satellite Twister (short cable)

- Required activation force: 30 gr
- Easy to mount in different positions by using the Quick-to-mount (Q2M) system
- Available in two different cable lengths: 300 mm or 1500 mm
- 3.5 mm mono jack plug



## mo-Vis Micro Joystick



To tilslutnings- muligheder	Micro Joystick	
	R-NET bus	Omni
Art. no.	75063	75049

**This Micro Joystick is a small proportional joystick, especially designed for people with poor or weak muscular power and/or restricted movement.**

- Very small proportional joystick which can be controlled with minimal force (+/- 8.5 gr)
- Joystick can be controlled by finger, lip, tongue, ...
- Ergonomic design for easy use
- Supplied with two ends: a small ball and a tub
- Due to the high sensitivity mainly to be used by people with neuromuscular diseases
- Separate interface with sophisticated electronics: joystick adaptable to individual capabilities and needs
- Free downloadable software to configure joystick via PC (equipped with a mini USB port)
- Delivered with Quick-to-mount (Q2M) Rods and Clamps
- Omni, R-net, Easy Rider, e-fix Alber, Otto Bock Curtis and DX compatible (for Easy Rider, Efix, Otto Bock Curtis or DX, a supplementary interface is required)

## mo-Vis Multi Joystick



To tilslutnings- muligheder	Multi Joystick	
	R-NET bus	Omni
Art. no.	75064	75050

**The Multi Joystick is designed to be used as chin joystick, but thanks to its flexibility, it can easily be controlled by other parts of the body. As the name says, this joystick is multifunctional and can be controlled by chin, finger, lip etc..**

**In our product range, the Multi Joystick is situated between the Micro Joystick and the standard All-round Joystick.**

- Pure proportional joystick with reduced amplitude and force requirement (50 gr)
- Built in a compact and discreet housing with two 3.5 mm jack inputs for switch input
- 1 or 2 switches (like e.g. Twister) can be immediately plugged as on/off or mode switch
- Recommended for people with tetraplegia or neuromuscular diseases (ALS, MS..)
- Light version of the standard joystick and therefore ideal for use as a chin-, lip- or finger joystick
- Separate interface with sophisticated electronics: joystick adaptable to individual capabilities and needs
- Free downloadable software to configure joystick via PC (equipped with a mini USB port)
- Delivered with Quick-to-mount (Q2M) Rods and Clamps
- Omni, R-net, Easy Rider, e-fix Alber, Otto Bock Curtis and DX compatible (for Easy Rider, Efix, Otto Bock Curtis or DX, a supplementary interface is required)

## mo-Vis Heavy Duty Joystick



To tilslutnings- muligheder	HD Joystick	
	R-NET bus	Omni
Art. no.	75061	75065

**The All-round Heavy Duty Joystick is a durable version of the standard All-round Joystick with enlarged throw and force.**

**As the name suggests, this joystick has been developed for persons with excessive force development like spasticity, dystonia or users with extreme hypertonicity.**

**This fully proportional joystick has a compact and solid housing with 2 jack inputs for switches.**

- Fully proportional joystick with increased amplitude and high power requirement (650gr - 22.93 oz)
- All-round Heavy Duty use : can be used as joystick to be operate with the hand, the foot, ...
- Switches for on/off function or mode button, so directly connectable
- Fully adjustable to individual possibilities and needs
- Easily configurable with the free mo-Vis Configuration software
- Omni, R-net, Easy Rider, e-fix Alber, Otto Bock Curtis and DX compatible (for Easy Rider, Efix, Otto Bock Curtis or DX, a supplementary interface is required)



N.B.

Connects to powered wheelchairs with R-net electronics

	<b>USB</b>
<b>Art. no.</b>	75059

### (R-net) Dual Port isolated USB Charger, 3 Amp

The Dual Port isolated USB Charger can be used to charge any USB-powered device with a power consumption of up to 3 A. The unit is powered by the wheelchair (24 V) and will transform the 24 V input voltage to an USB output voltage.

N.B.

The charger only functions when the chair is turned on.

### Power Supply 7-20V 3A



	<b>Power Supply</b>
<b>Art. no.</b>	75060

This Power Supply adj. 7-20V, 3 Amp is intended to be fitted on any powered wheelchair with 24V connection and can be used to power any device with a DC voltage from 7 to 20 V and a power consumption of up to 3 A.

The unit is powered by the wheelchair (24V) and will transform the 24V input voltage to an adjustable (7-20V) output voltage.

The Adjustable Fused Power Supply is double fused: the power and ground wire of the output are fused. This is to prevent from accidents in case of a damaged load or cables.



	<b>Multi Switch</b>
<b>Art. no.</b>	75084

The Multi Switch unit enables the use of a single input device to control up to four outputs. This offers more operating options to the user with just one single input.

One 3.5 mm stereo input jack to connect a mechanical switch  
 Two 3.5 mm stereo jacks to connect up to four separate outputs  
 Usb powered (usb charger, power bank, laptop, tablet,...)  
 Fully adjustable to individual possibilities and needs  
 Easily configurable with the free mo-Vis Configuration software  
 Different select modes : Click, Start & Scan, Hold and Scan  
 Different output modes : momentary/timed or switched  
 2 operation modes: locked/unlocked in any output  
 Maximum 4 active outputs  
 Auditory and visual feedback  
 Different time settings: debounce, select, close and quit time  
 Different auditory feedbacks: input-, select-, output- and quit beep



### External control for power functions



	w. control for R-net 75000	w. control for R-net 75045
Art. no.	75096	75098

### External control for power functions

The keypad allows to control the actuator's axes (lifts) 1 to 5 on an R-net system. The keypad is available in two versions: with buttons or with paddles. There are two different versions of keypads available for CJS1 or CJS2 joysticks. Simple connection: via a 3.5 mm stereo jack into the mode socket of the joystick. Some R-net parameters need to be set correctly before the keypad is operational. For these settings we refer to the Curtiss-Wright manual.

### External control for power functions



	w. control for R-net 75000	w. control for R-net 75045
Art. no.	75095	75097

### External control for power functions

The keypad allows to control the actuator's axes (lifts) 1 to 5 on an R-net system. The keypad is available in two versions: with buttons or with paddles. There are two different versions of keypads available for CJS1 or CJS2 joysticks. Simple connection: via a 3.5 mm stereo jack into the mode socket of the joystick. Some R-net parameters need to be set correctly before the keypad is operational. For these settings we refer to the Curtiss-Wright manual.

### External control for power functions



	w. control for R-net 75000	w. control for R-net 75045
Art. no.	XX	XX

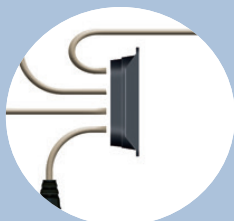
### External control for power functions (Model 2008)

This unit allows the driver to operate all the chairs functions directly on the separate control panel allowing the chairs joystick to stay in driving mode.

If the chair is equipped with R-nets most sophisticated joystick-solution (75045) the functions unit can be operated simultaneously with driving the chair. Can be mounted on either side of the chair. (Typically on the armrest)

## Ass. parts

### R-net Connector

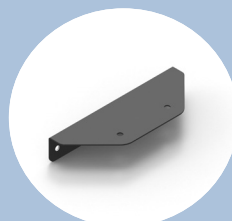


R-net Connector  
Block

Art. nr.

R-net Connector Block	75019
-----------------------	-------

### Mounting bracket



Bracket for R-Net  
Bus splitter to  
CT4/ Python/HD  
/VIPER

Art. nr.

Bracket-CT4/ Python/HD VIPER	71279
---------------------------------	-------

### R-net Cables

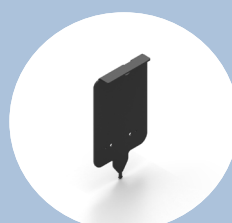


R-net Cables

Art. nr.

0.3 meter	75003
0.5 meter	75004
1.0 meter	75005
1.2 meter	75006
1.5 meter	75007
2.0 meter	75008
2.5 meter	75009
3.5 meter	75010

### Mounting bracket



Holder for Omni2  
without mount-  
ing arm

Art. nr.

Bracket	72027
---------	-------

### RAM mounts



RAM mounts

Art. nr.

RAM mount 1" Arm	90229
RAM mount 1" Arm in 2 balls f. fixed mounting	90227
RAM mount 1" double ball	90228

## Mounts

### Swing mount



Bracket  
Swing mount for  
Joystick Module

Art. nr.

Right  
Left

71682  
71683

### Fixed mount



Bracket  
fixed mount for  
Joystick Module

Art. nr.

Right  
Left

70291-R  
70291-L

### Mounting bracket



Bracket mounting  
for External control  
for power functions  
on a fixed bracket

Art. nr.

Mount f. controlbox Movis	72087
Mount f. controlbox 2008	71429
Mounting tube f. swing	71963

### Mounting bracket



Bracket mounting  
joystick for dual  
attendant Joystick  
Module

Art. nr.

Right  
Left

71891-R  
71891-L

### Mounting bracket



1-hand operated  
attendant module  
without control  
box Roltec / R-net

Art. nr.

Attendant module

71076

## attendant



	Art. no.
Attendant	71507
LED	71508
CJSM	71509
CJEM2	71510

## attendant control packages

Fittings, control box and cable.

## attendant



	Art. no.
Attendant	71687
LED	71688
CJSM	71689
CJEM2	71690

## attendant packages

1-Hand operated attended modul, with controlbox and cable.

## Scoot Control R-net packages



	Art. no.
Mo-vis	XX

## Scoot Control R-net packages with fittings

Fully proportional handle bar with 2 rubber handles and 2 configurable thumb throttles.

Built in compact housing, with a 3.5 mm stereo jack to connect an external actuator keypad (Curtiss-Wright CJSM2 compatible). (E.g. mo-Vis' Actuator Keypad)

Full access to wheelchair functions such as Lights, Horn and Speed settings.

Battery and speed display via LEDs.

On-board configuration possible.

Compatible with multiple types of wheelchair equipped with R-net electronics.



## Ass. parts

### Twister Basic



The Twister basic can be mounted on a plate of metal/plastic with 2 screws or can be integrated in a tray or other flat surface.

Art. nr.

150cm cabel

75056

### Twister button



The Twister basic is mounted in a plastic holder for mounting.

Art. nr.

plastic holder

75057

### Piko Button



30mm in diameter  
75g pressure

Art. nr.

Black 20cm cabel

90244

Black 150cm cabel

90245

### Twister on bend-



The Twister is attached to a mo-Vis Quick-to-mount bended tube of 10 cm (3,94 in) and 6 mm (0,236 in) diameter. Twister on bended tube can be mounted using the Quick-to-mount clamps to attach to other rods or wheelchair.

Art. nr.

150cm cabel

75054

30cm cabel

75055

### Piko button - water resistant



Waterproof

30 mm or 50 mm in diameter  
125 g pressure

Art. nr.

Black 150cm cabel

90246

### Satellite Twister



The Twister is equipped with an insert to mount on the All-round Joystick.

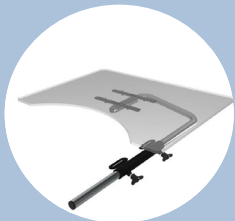
Art. nr.

75053



## Table

### Table width

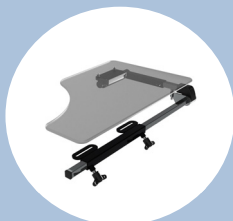


mounted on armrests

Art. nr.

90000

### Table half



mounted on armrests

Art. nr.

69334

### Tabel "C-profil



mounted in c-profile

Art. nr.

AN-20502

## Ass. parts

### Lights and indicators

#### Lights - front and rear



Led lights - front  
and rear (led)

Art. nr.

CT4/Python/HD	71071
VIPER	70950
BOA/BOA2	69280
MOVEO	71883

#### Separate Indicator Lights



Separate Indica-  
tor Lights (led)

Art. nr.

CT4/ Python/HD	71475
VIPER	71475
BOA/BOA2	69320
MOVEO	71940

### Chargers

#### Chargers



EC-Buddy  
10A - lader/XLR

Art. nr.

CT4/HD/VIPER/BOA	71066
------------------	-------

#### Joystick Knob Options



Joystick knob  
options available  
to fit the PGDT

Art. nr.

Grab (standard)	75031
Ball B38	75040
Chin C38	75038
Mushroom M48	75037
Soft Ball SB70	75036
Stick S30	75041
Stick S80	75039
T-Bar T80	75042

## Gel Batteries From Exide/Sonnenschein for CT4/HD/VIPER/BOA

### Battery



Battery 38 Ah\*/33 Ah  
(single)

Art. nr.

CT4/HD/VIPER/BOA

(You must order a set of 2)

69236

### Battery



Battery 56 Ah\*/51 Ah  
(single)

Art. nr.

CT4/HD/VIPER/BOA

(You must order a set of 2)

60735

### Battery



Battery 70 Ah\*/63 Ah  
(single)  
On Boa2 and Moveo also  
requires "bat kit"

Art. nr.

CT4/HD/VIPER/BOA

(You must order a set of 2)

63248

### Battery



Battery 80 Ah\*/72 Ah  
(single)

Art. nr.

CT4/HD/VIPER

(You must order a set of 2)

60337

\*Ah of the battery tested according to the C20 standard.

C20 = Discharging the battery for 20 hours at a constant current until to its terminal voltage (usually about 1.75 volts)

Battery capacity varies. Manufacturers will normally specify several discharge rates (in amperes) along with the associated discharge time (in hours). When the battery is discharged at a constant rate of current over a number of hours, this is referred to as the "C" rating. Many batteries are rated at the C20 rate, which means that they will deliver their amp hour capacity if discharged over 20 hours.

Battery pack	Moveo FRONT WHEEL DRIVE	CT4 REAR WHEEL DRIVE	HD- HEAVY DUTY REAR WHEEL DRIVE	PYTHON REAR WHEEL DRIVE	VIPER FRONT WHEEL DRIVE	BOA2 CENTER WHEEL DRIVE
Battery 38 Ah/33 Ah	72103	72071		72071	72105	72062
Battery 56 Ah/51 Ah	72092	72069		72069	72067	72066
Battery 70 Ah/63 Ah	72104**					69297**
Battery 80 Ah/72 Ah		72070		72070	72068	

\*\*BOA and Moveo if needed choose 70 Ah batteries, this will increase the chairs height with 2 cm.









Company's headquarters:

ROLTEC el-kørestole A/S • Lægårdsvej 13, DK - 8520 Lystrup • Telefon +45 87 43 49 00 • Telefax +45 87 43 49 29

Website: [www.roltec.com](http://www.roltec.com)

Mail: [info@roltec.com](mailto:info@roltec.com)